

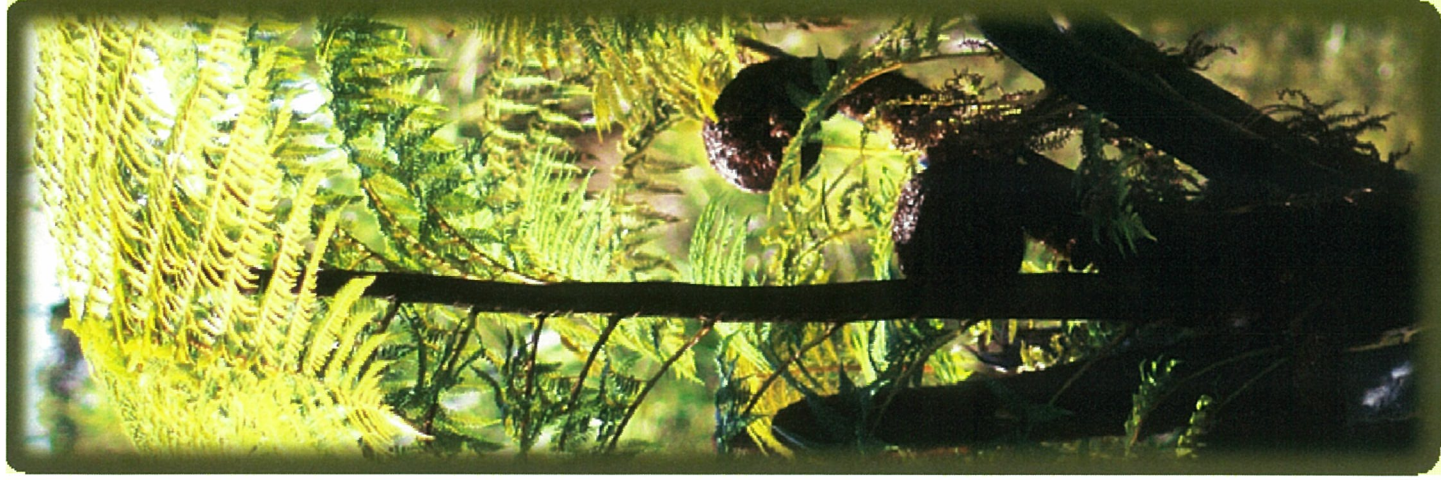


# **Our People Our Future Our Way**

Mereana Selby

Te Wānanga o Raukawa  
14 Whiringa-ā-nuku 2014





---

# **A Vision of the Future of Te Wānanga o Raukawa**





# Te Wānanga o Raukawa 2014

---

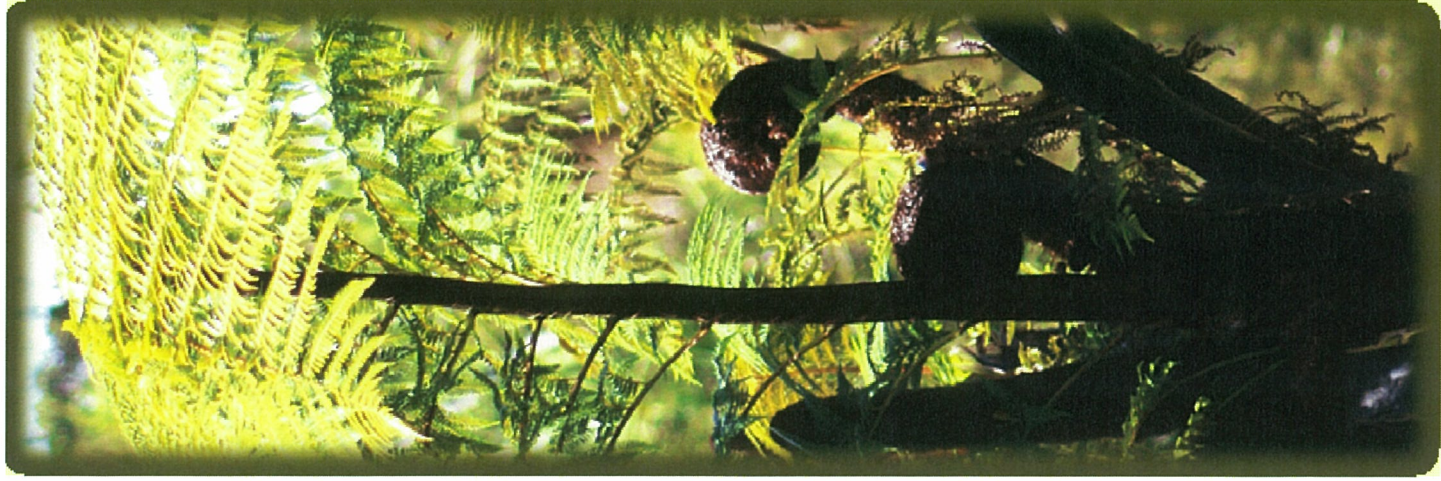
- ❑ Our 34th year
  - ❑ 2500 students
  - ❑ 23 degrees on offer
  - ❑ Survival as a People is  
our purpose
-



# Te Wānanga o Raukawa

---

- Current
- appealing
- Agile
- Relevant
- Distinctive
- Thoroughly Māori!





# Thoroughly Māori

---

It's the kaupapa!

Rangatiranga

Whakapapa

Manaakitanga

Te Reo

Kōtahitanga

Kaitiakitanga

Ūkaipōtanga

Pūkengatanga

Wairuatanga

Whanaungatanga





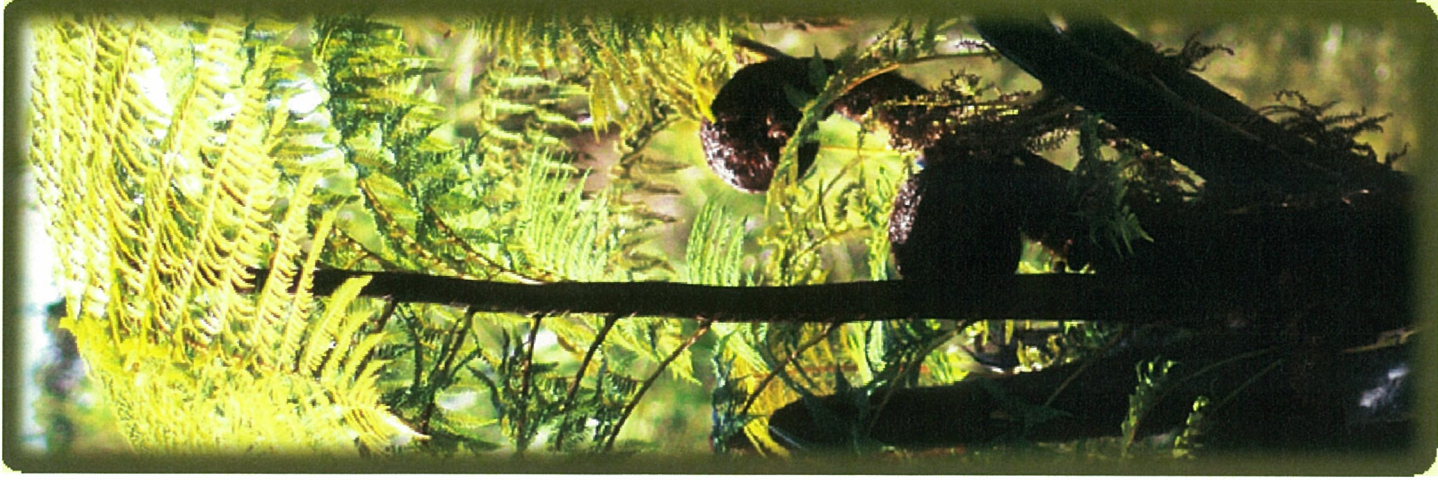
# Our Wānanga

---

**Established by:**

- **Te Āti Awa**
- **Ngāti Raukawa**
- **Ngāti Toarangatira**

***The ART confederation***





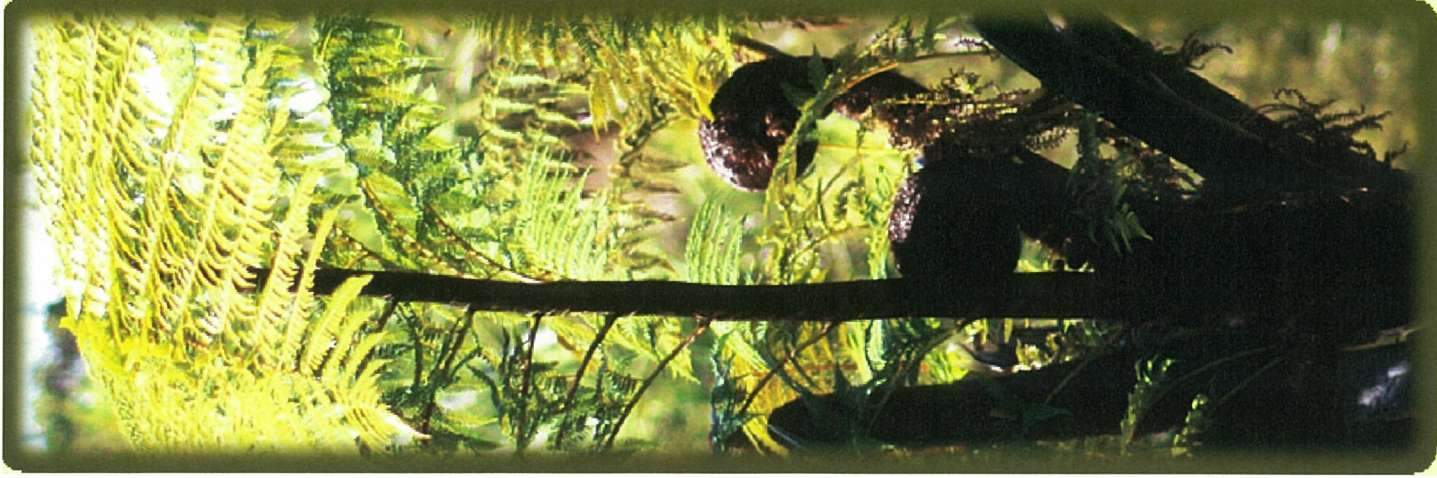
# Natural Tension

---

*Kāwanatanga*

*and*

*Tino Rangatiratanga*





# Te Tirohanga Whakamua

---

- *Vision Statement*
- *Action Plan*





# **Vision Statement based on:**

## **Our whakataukī:**

*E kore au e ngaro;  
he kākano i ruia mai i Rangiātea*

## **Our key purpose:**

*Maximise our contribution to survival of Māori as a people*

## **Our key goal:**

*Kia Māori ā tātou mokopuna*

## **Our current circumstances:**

*The challenges faced in tertiary learning environment*



# **The Statement; *that:***

Our model focuses on and contributes to the survival of Māori as a people

**We provide a range of academic offerings that are appealing to our people**

Our courses are delivered in ways that facilitate achievability for our people

**Our model is cost effective and viable**

Pathways to further advancement through study and employment are evident

**Our offerings are distinctive**

Our work is enjoyable and fulfilling



A photograph of a forest floor, showing a tree trunk in the foreground and various ferns and foliage in the background. The image is oriented vertically, matching the text layout.

## **Two parts to the work:**

That which can be achieved in a 2-month timeframe and which will better position us to prepare for the 2015 academic year, and

That which needs to be done but will take a longer time frame to achieve for the remainder of 2014 and into 2015.





# Workplan

---

A workplan has been generated

Tasks aligned to three deadlines:

- Aug 31
- October 30
- February 28, 2015

Kaihautū allocated responsibilities

*We are on track with most targets.*



# Audit of Courses for 2015

---

Red zone:

*Not on offer*

Orange zone:

*On notice*

Green zone:

*On the schedule*





# New Academic Model for Degrees

---

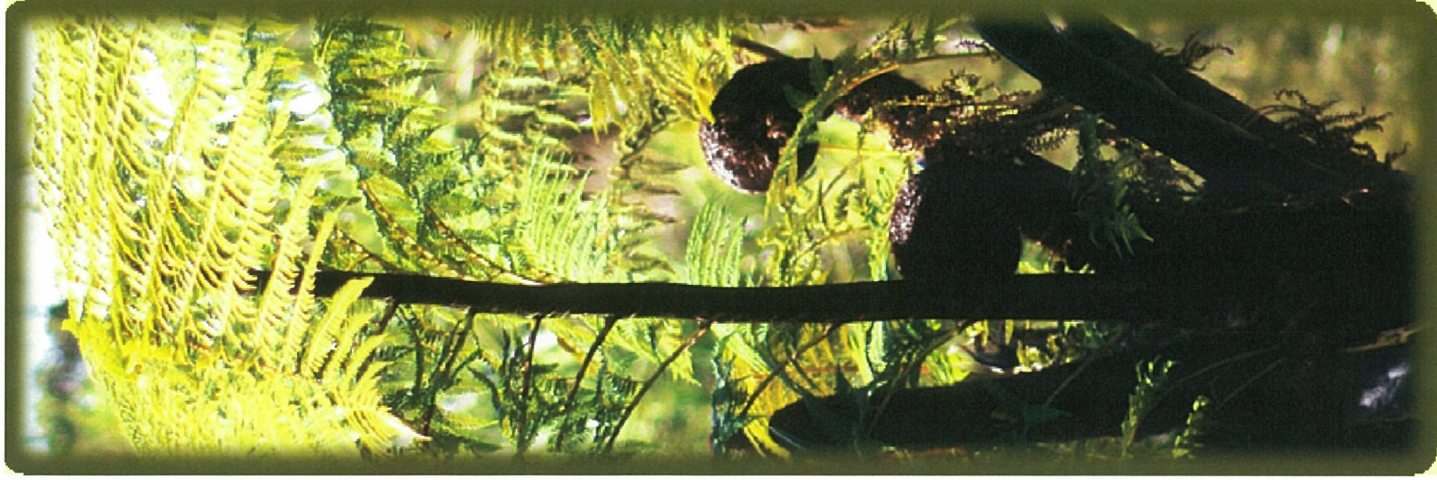
Credit load per year will be 120:

Specialisation: 60 credits

Iwi and Hapū studies: 30 credits

Reo: 30 credits

*Total:* 120 credits





# **Courses offered through blended learning model**

---

On-line pre and post Noho engagement

On-line teaching and assessing

Internet engagement

Face to face teaching

Classroom experience

Teaching on marae and other venues

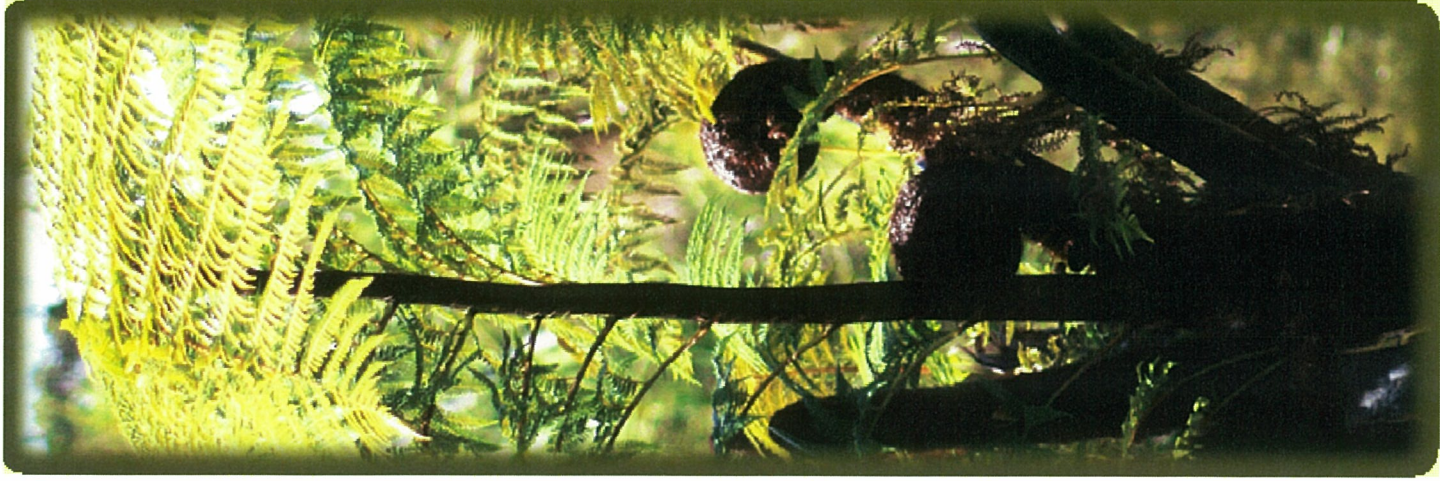




# Academic year divided in to 2 semesters

---

March to June;  
mid-July to mid-November







# The new Academic model

---

- Shorter study year
- Fewer papers
- Fewer assessments
- Standardised credits
- 2 semesters
- On-line component
- *Has been approved by NZQA*



# Priorities for TWoR

---

- Home for carvings
- Library upgrade
- Student lounge area
- Large multi-purpose space
- Kaitiakitanga model
- archives



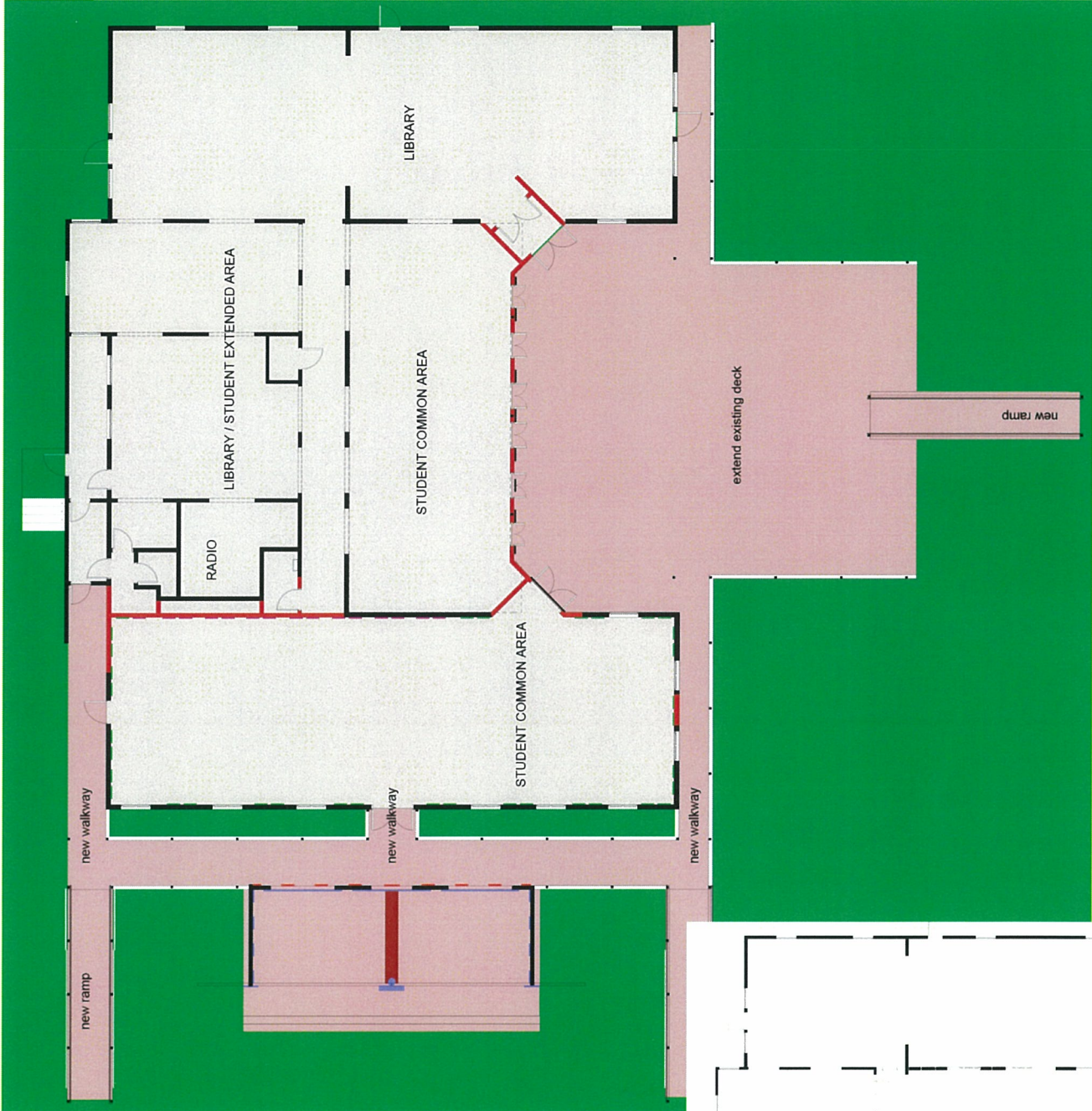


# Proposed Refurbishment to the whare Whitireia ki te Te Wānanga o Raukawa

28<sup>th</sup> Feb 2014



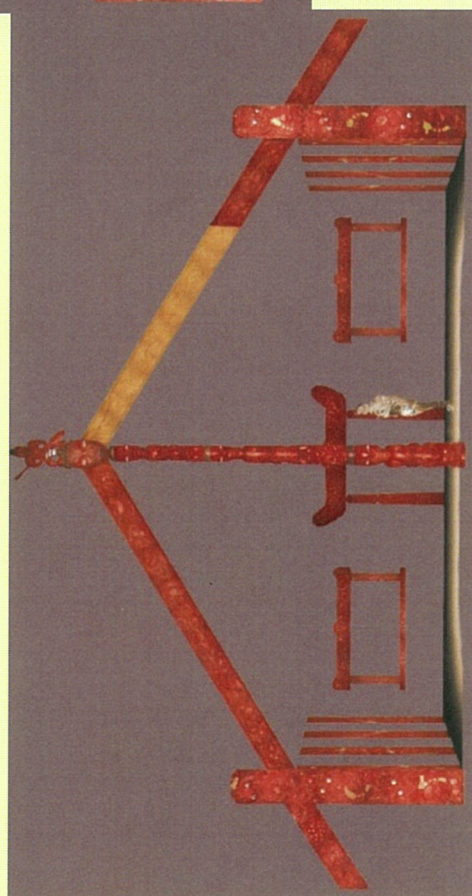
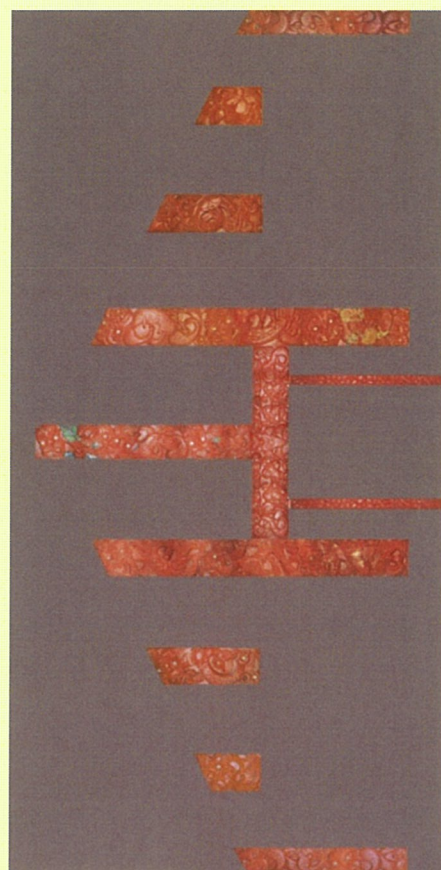




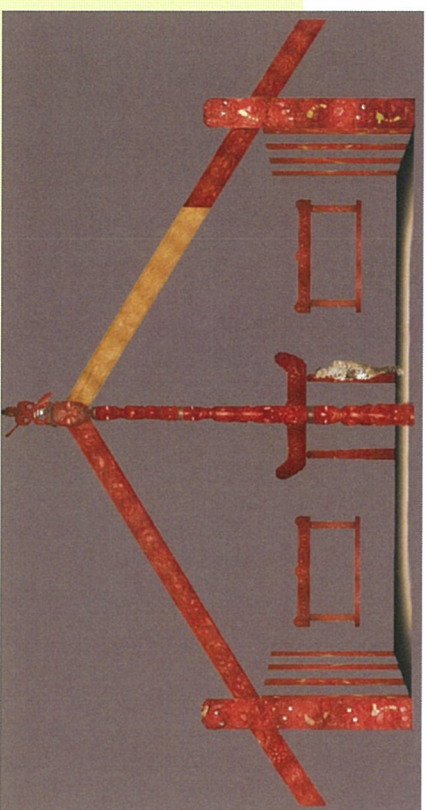
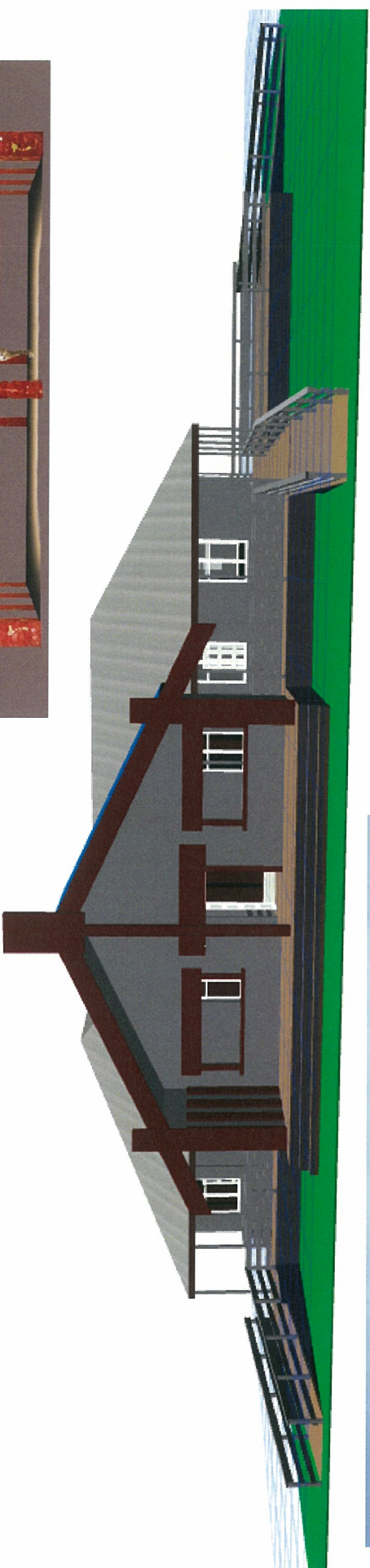




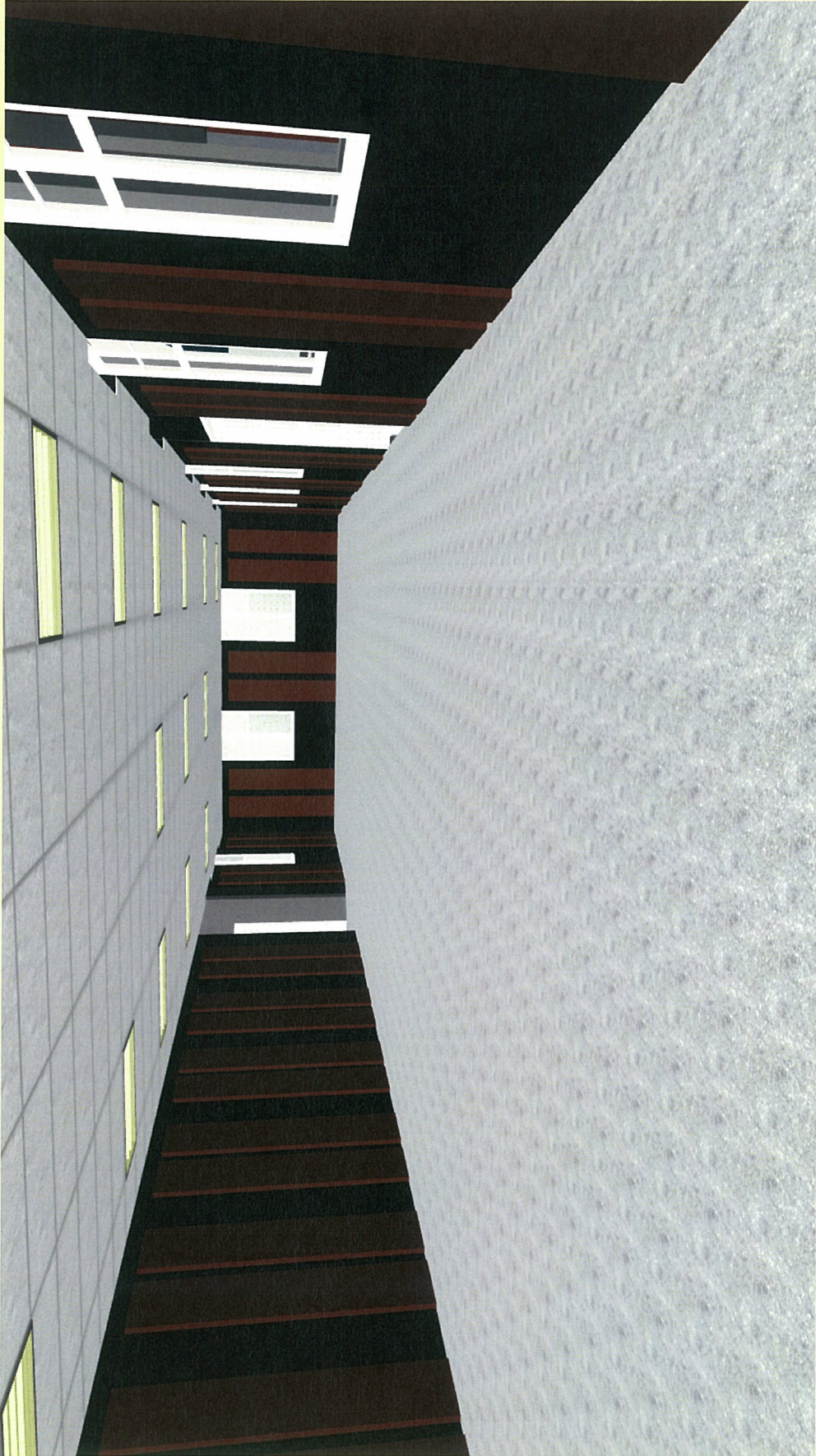




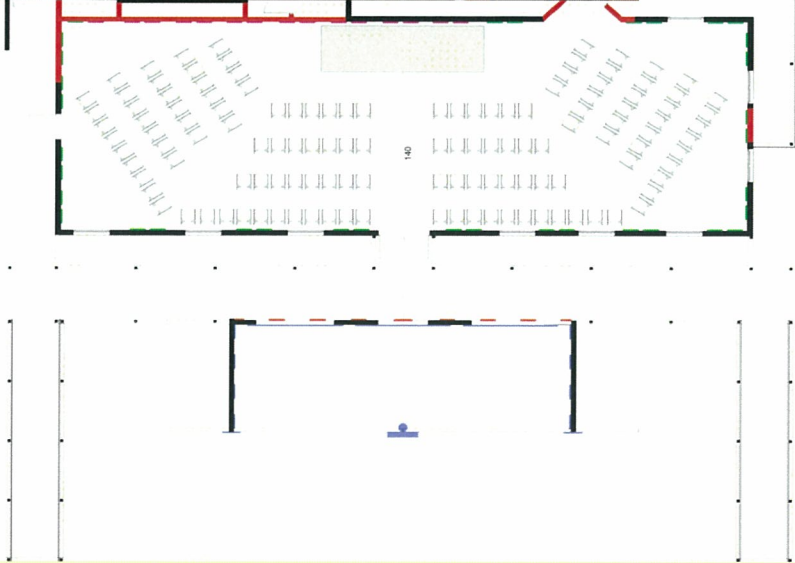
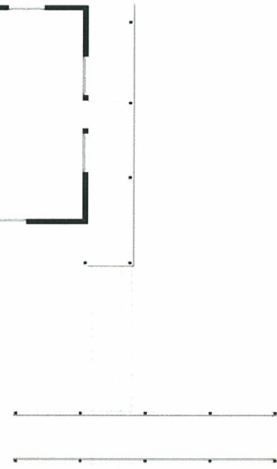




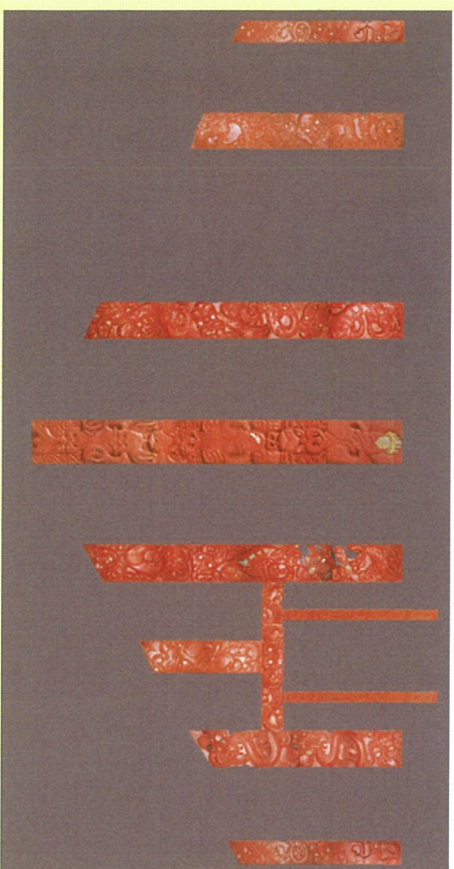
















---

**E kore au e ngaro;**  
***He kākano i ruia mai i Rangiātea***

---